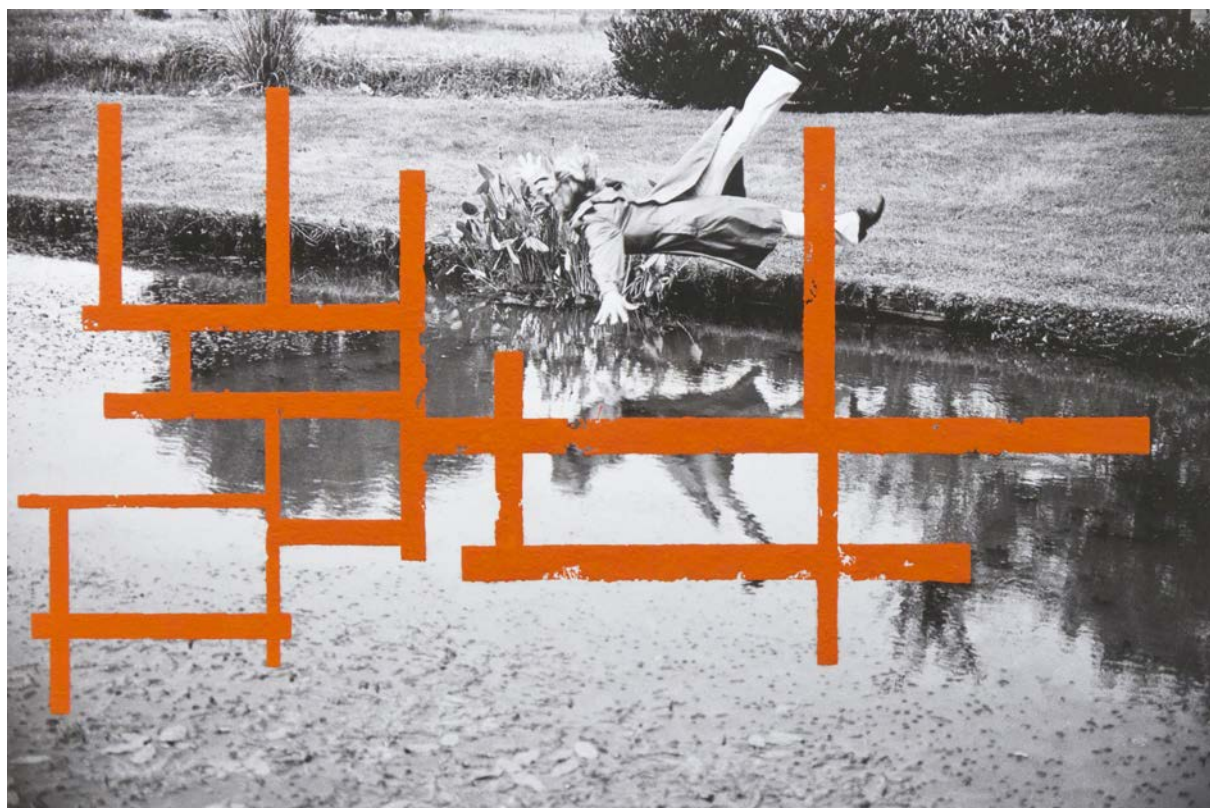


PIETER LAURENS MOL – READ LEAD INDEX



Index (Bold Version), 1981/2017

PLM Inv.Nr.: 1921

RED LEAD INDEX

Die aktuelle Ausstellung Red Lead Index von Pieter Laurens Mol (geb. 1946, Breda-Niederlande) konzentriert sich auf die Auseinandersetzung des Künstlers mit dem historischen Pigment Red Lead (Minium, Pb304). In Zeichnungen, Fotografien und Installationen aus einem Schaffenszeitraum von über vierzig Jahren erforscht er die poetische Dimension dieser spezifischen Farbe, die auf die Frühzeit der Malerei in den Miniaturen der mittelalterlichen Buchkunst verweist.

Mit dieser besonderen Werkgruppe formuliert er grundlegende künstlerische Fragen, die - in der gleichnamigen Arbeit "Index" - auch um das Verhältnis von Fotografie und Malerei kreisen.

Die Strahlkraft dieses ersten künstlich erzeugten Pigments, das eindeutig zum Blau des Himmels komplementär ist und irgendwie immer dem melancholischen Temperament zugeschrieben wurde, kam mit chemischen Tücken, wie einer starken Toxizität und Empfindlichkeit gegenüber Farbänderung durch Oxidation. Das auch als Saturnrot bezeichnet Minium wurde zuletzt in der Landschaftsmalerei der Romantik verwendet, um dem Sommeruntergang sein Glühen zu verleihen. Die Verwendung von Minium ist dann, nicht zuletzt aufgrund seiner praktischen Mängel, nahezu vollständig abgeklungen.

Die überwiegend in den siebziger und achtziger Jahren entstandene fotografischen Selbstinszenierungen des Künstlers zeigen, wie bei „Index“, häufig Momente des Fallens oder des Verlustes von Gleichgewicht. Wenn es in der Kunst von Pieter Laurens Mol, wie er selbst beschreibt, darum geht, Bilder für eine „extreme Existenz“ zu finden, so ist Red Lead eine äquivalente Farbe.

Index, ein Fachbegriff der Semiotik, bezeichnet ein Zeichen, dessen Besonderheit darin besteht, eine physische Verbundenheit zu den Dingen, die es zeigt, zu unterhalten, gleich einer Spur. Indem Pieter Laurens Mol die Fotografie und den ihr anhängenden indexikalischen Bezug zur Realität durch den Auftrag einer abstrakten malerischen Spur aus reinem Minium überlagert, konkurriert hier die Realität des Bildes mit der bildlich dargestellten Realität und wird zur Kippfigur.

PIETER LAURENS MOL – READ LEAD INDEX

--- English version ---

PIETER LAURENS MOL RED LEAD INDEX

The current exhibition Red Lead Index by Pieter Laurens Mol (born 1946, Breda-Netherlands) focuses on the artist's exploration of the historic pigment red lead (minium, Pb_3O_4). In drawings, painted over photographs and installations, spanning a creative period of over 40 years, he examines the poetic dimension of this specific colour, which goes back to the early era of painting as shown in the miniatures of medieval illuminated manuscripts.

With this particular group of pieces, he somehow re-formulates fundamental artistic questions, which - in the eponymous work "Index" - also address the interaction between photography and painting.

The radiance of this first artificially produced pigment, which is clearly complementary to the blue of the sky and was somehow always attributed to the melancholic temperament, came with chemical pitfalls such as a strong toxicity and vulnerability to colour change or oxidation. Indeed, often also referred to as Saturn red, minium was last used in landscape painting during the Romantic period in order to depict sunsets with an authentic glow. The use of minium subsequently subsided almost entirely, not least due to its practical shortcomings.

As in "Index", one of the artist's works of photographic self-staging, which primarily date from the 1970s and 1980s, often depict moments of defying the forces of gravity or a loss of balance. If his art is an attempt to locate an "extreme existence", to use Pieter Laurens Mol's own words, then red lead is the proper paint and colour for this artistic search.

Index, a technical term from semiotics, refers to a sign that specifically maintains a physical relationship to the things it represents or shows - akin to a trace. Through Pieter Laurens Mol's superimposition of photography and its supplementary indexical relationship to reality by applying an abstract painterly trace of pure minium, the reality of the image created starts to compete with the reality that has been visually reproduced, thus becoming an ambiguous story or visual enigma.

Pieter Laurens Mol is represented in numerous private and public collections such as Kunstmuseum Bern, Staatsgalerie Stuttgart, Museum of Contemporary Art Chicago, Sprengel Museum Hannover, Stedelijk Museum Amsterdam, Musée D'Art Montreal, Pinakothek der Moderne München, MoMA New York, IVAM Centre Valencia, Moderna Museet Stockholm, a.o.

PIETER LAURENS MOL – READ LEAD INDEX



Pieter Laurens Mol – Red Lead Index, Installation view, Parrotta Contemporary Art Cologne, 2018

PIETER LAURENS MOL – READ LEAD INDEX



Pieter Laurens Mol – Red Lead Index, Installation view, Parrotta Contemporary Art Cologne, 2018

PIETER LAURENS MOL – READ LEAD INDEX



L'Air du Temps, 1982

PLM Inv.Nr.: 0803

red and white lead, lead pencil and lead on brown-toned paper on strawboard,
mounted on base board; painted wood frame
64,9 x 73,8 cm (frame size)
37,2 x 48 cm (image size)

PIETER LAURENS MOL – READ LEAD INDEX



Pieter Laurens Mol – Red Lead Index, Installation view, Parrotta Contemporary Art Cologne, 2018



No Sparrows, 1998

PLM Inv.Nr.: 1849

red lead paint on purple-monochrome picture postcard,
mounted in passe-partout; varnished lime wood frame
26,1 x 30,1 cm (frame size)
8,9 x 13,9 cm (postcard size)

3.800 €

PIETER LAURENS MOL – READ LEAD INDEX



Spleen Escutcheon, 2007

PLM Inv.Nr.: 1734

red and white lead paint, sheet lead on oakwood panel
19,6 x 17,4 cm



Saturn Water, 1988

PLM Inv.Nr.: 0658

casted lead, red lead paint on glass
4,8 x 7,5 x 2 cm (object size)

PIETER LAURENS MOL – READ LEAD INDEX



Melancholia Ring, 1988

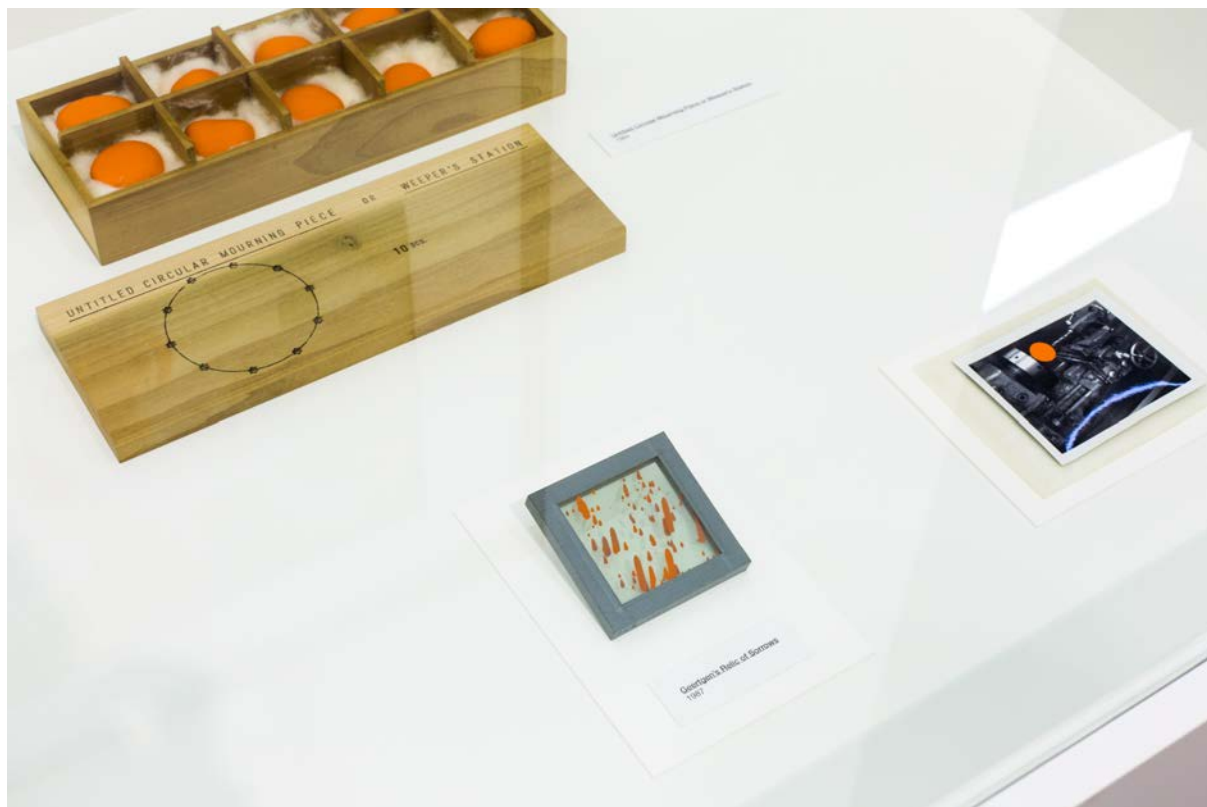
PLM Inv.Nr.: 1291

leaden ring with enamel button, synthetic enamel paint on plaster base

diam. 2,4 cm (ring size)

5,5 x 6,5 x 6,5 cm (base size)

PIETER LAURENS MOL – READ LEAD INDEX



Pieter Laurens Mol – Red Lead Index, Installation view, Parrotta Contemporary Art Cologne, 2018



Untitled Circular Mourning Piece or Weeper's Station, 1984

PLM Inv.Nr.: 1946

red lead on stone pebbles, stamped text on magnolia wood box with cotton pads
diam. floor piece variable
10,8 x 30,2 x 6 cm (box size)

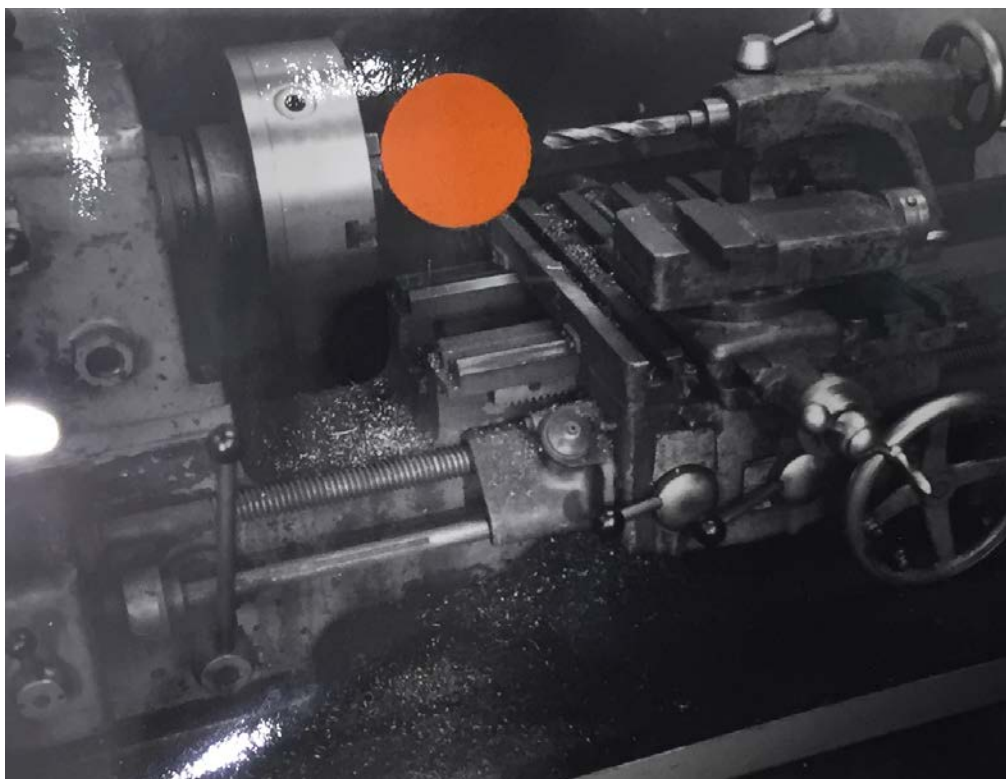
PIETER LAURENS MOL – READ LEAD INDEX



Geertgen's Relic of Sorrow, 1987

No inventory number

red lead paint on collected glass parts with grey paper tape,
stamped initials
7,8 x 7,8 x 0,9 cm (object size)



Dusky Mechanics, 2004

No inventory number

red lead paint on black-and-white Polaroid photograph
8,6 x 10,8 cm

PIETER LAURENS MOL – READ LEAD INDEX



Pieter Laurens Mol – Red Lead Index, Installation view, Parrotta Contemporary Art Cologne, 2018

PIETER LAURENS MOL – READ LEAD INDEX



Breukelen Atelier Lamentum, 2004

PLM Inv.Nr.: 1947

red lead paint on black-and-white inkjet photo print with stamped title,
mounted in passe-partout; Indian ink on beechwood frame

59 x 68,6 cm (frame size)

50,5 x 40 cm (effective image size)

PIETER LAURENS MOL – READ LEAD INDEX



Icarus Flower, 1986

PLM Inv.Nr.: 0917

red lead paint on old glass, swan's feathers and lead;
zinc paint on steel support
46 x 52,8 cm (panel size)

PIETER LAURENS MOL – READ LEAD INDEX



Pieter Laurens Mol – Red Lead Index, Installation view, Parrotta Contemporary Art Cologne, 2018

PIETER LAURENS MOL – READ LEAD INDEX



Index, 1981/2017

PLM Inv.Nr.: 1923

red lead paint on inkjet photo print on Dibond, varnished
149 x 181 cm (panel size)

40.000 €

PIETER LAURENS MOL – READ LEAD INDEX



Pieter Laurens Mol – Red Lead Index, Installation view, Parrotta Contemporary Art Cologne, 2018

PIETER LAURENS MOL – READ LEAD INDEX



Ohne Titel (Bleimennigfeld), 1979

PLM Inv.Nr.: 1439

red lead and typed text on black-and-white gelatin silver print;
mounted in passe-partout, veneered oakwood frame

37,7 x 32,8 cm (frame size)

17,5 x 12,5 cm (card size)

PIETER LAURENS MOL – READ LEAD INDEX



Pieter Laurens Mol – Red Lead Index, Installation view, Parrotta Contemporary Art Cologne, 2018

PIETER LAURENS MOL – READ LEAD INDEX



Mouches Volantes, 1987

PLM Inv.Nr: 0163

Read lead on 2 black-and-white gelatin silver prints
Mounted in passe-partouts, varnished oakwood frames
Diptych
Image, each 18 x 24 cm
Frame, each 32,5 x 38,5 cm

PIETER LAURENS MOL – READ LEAD INDEX



Pieter Laurens Mol – Red Lead Index, Installation view, Parrotta Contemporary Art Cologne, 2018

PIETER LAURENS MOL – READ LEAD INDEX

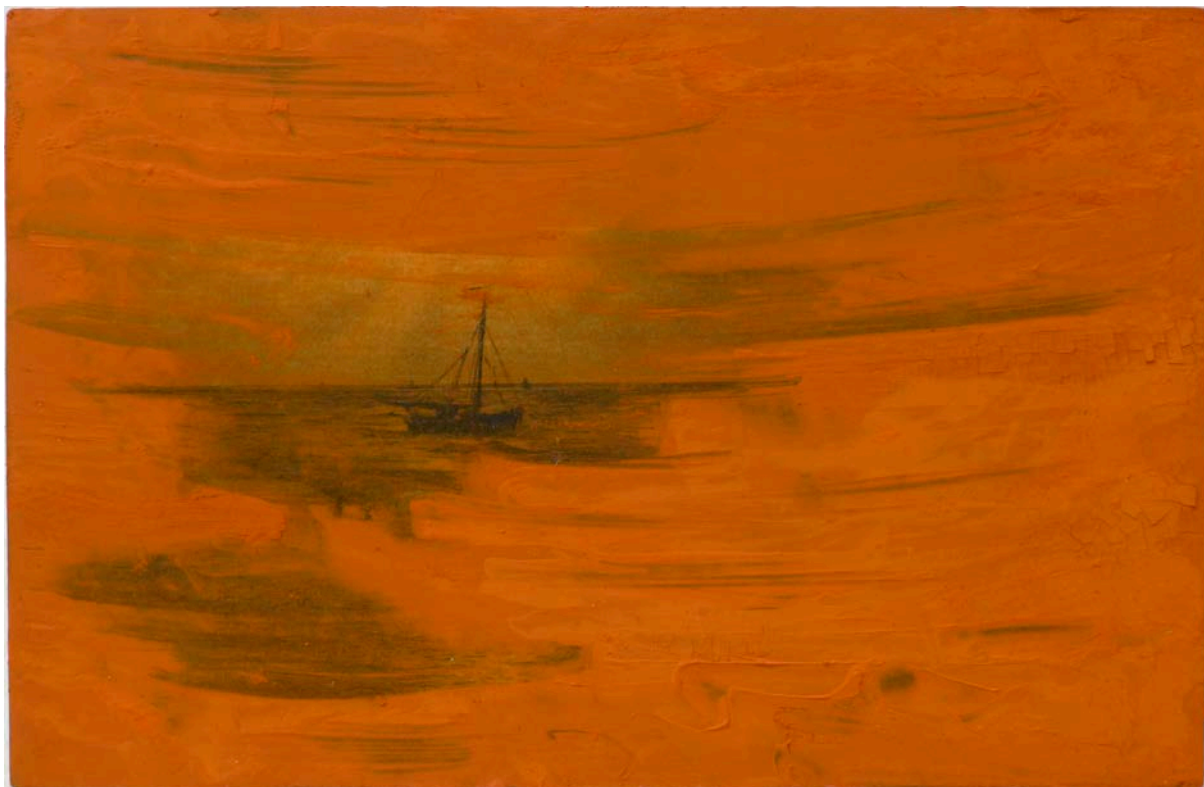


J'attendrai, 1984

PLM Inv.Nr.: 1749

red lead paint on black-and-white picture postcard,
mounted in passe-partout; stained and varnished maplewood frame
24 x 28 cm (frame size)
9,1 x 14,1 cm (postcard size)

PIETER LAURENS MOL – READ LEAD INDEX



Crépuscule, 1984

PLM Inv.Nr.: 1750

red lead paint on heliogravure postcard,
mounted in passe-partout; stained and varnished maplewood frame
24 x 28 cm (frame size)
9,1 x 14 cm (postcard size)

PIETER LAURENS MOL – READ LEAD INDEX



Zonder Titel (Bouwmateriaal), 1998

PLM Inv.Nr.: 1842-A

red and white lead on card,
mounted in passe-partout; oakwood frame
31,3 x 25,2 cm (frame size)
14 x 9,1 cm (card size)

PIETER LAURENS MOL – READ LEAD INDEX



Wiegeliedje, 1984

PLM Inv.Nr.: 0614

red lead and lead pencil on black-and-white gelatin silver print,
mounted in passe-partout; oakwood frame

37,9 x 31,8 cm (frame size)

19,3 x 15,5 cm (image size)

PIETER LAURENS MOL – READ LEAD INDEX



Wiegeliedje, 1984

PLM Inv.Nr.: 0615

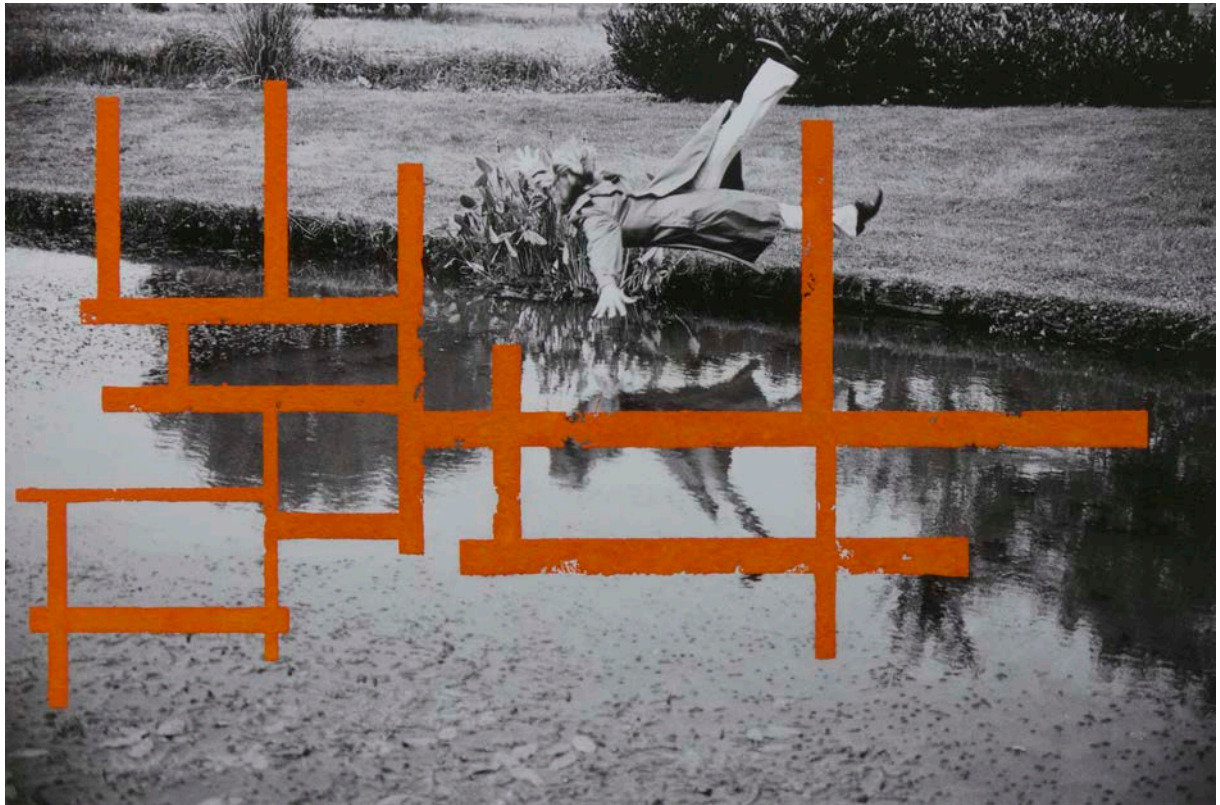
red lead on black-and-white gelatin silver print,
mounted in passe-partout; oakwood frame
42,8 x 34,1 cm (frame size)
23 x 17,3 cm (image size)

PIETER LAURENS MOL – READ LEAD INDEX



Pieter Laurens Mol – Red Lead Index, Installation view, Parrotta Contemporary Art Cologne, 2018

PIETER LAURENS MOL – READ LEAD INDEX



Index (Bold Version), 1981/2017

PLM Inv.Nr.: 1921

red lead paint on black-and-white inkjet photo print with stamped title, mounted in passe-partout; synthetic enamel on wood frame

92,6 x 119,2 cm (frame size)

55,8 x 84,3 cm (image size)

PIETER LAURENS MOL – READ LEAD INDEX



Ovaries (Plantation-Scheme for My Mother's Back-Garden) (Study Nr. 2), 1986
PLM Inv.Nr.: 1591

black-and-white gelatin silver print with punched holes, red lead paint on cardboard,
mounted in passe-partout; varnished pear wood frame
49,7 x 57,5 cm (frame size)
30,2 x 40,3 cm (image size)

PIETER LAURENS MOL – READ LEAD INDEX



Pieter Laurens Mol – Red Lead Index, Installation view, Parrotta Contemporary Art Cologne, 2018

PIETER LAURENS MOL – READ LEAD INDEX



Initial Score for "Weeping and Wailing", 1991

PLM Inv.Nr.: 1846

red lead paint on printed music score, mounted in passe-partout,
blackbird's nest, oakwood wall console with crystal glass cover;
varnished oakwood frame

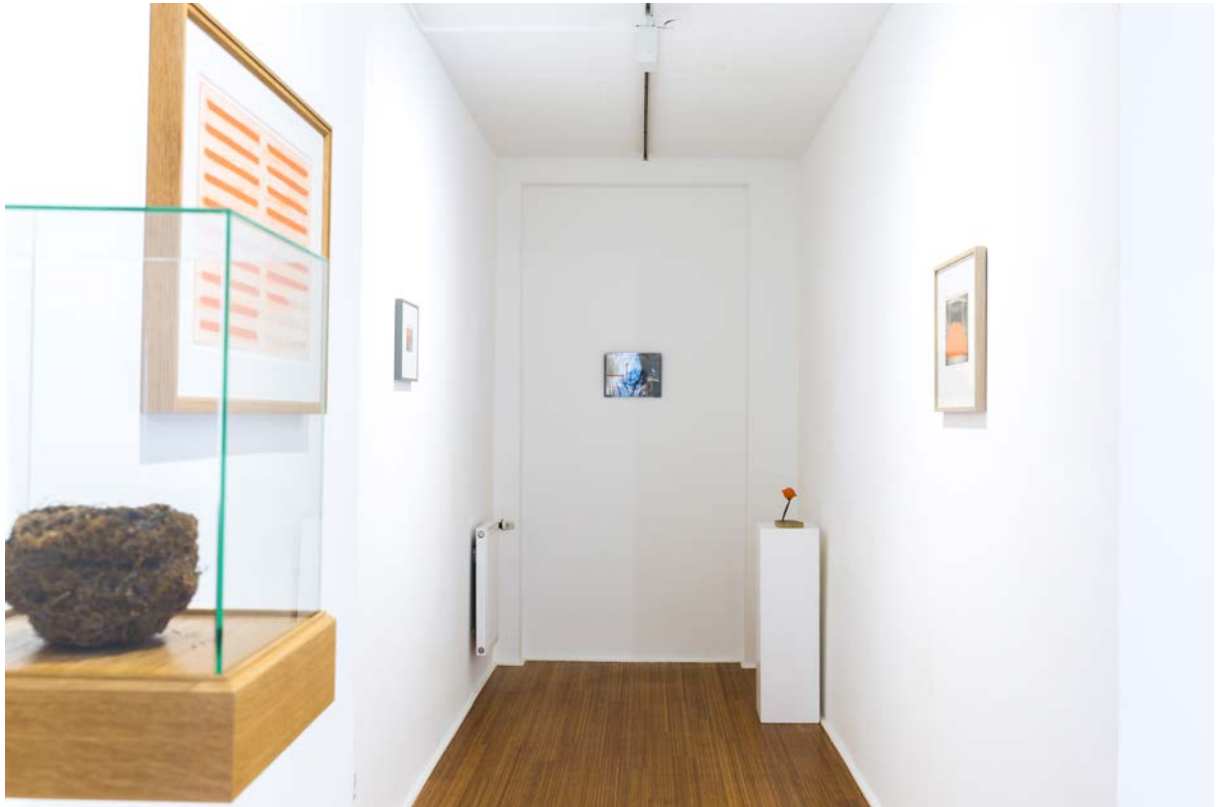
variable overall size

48,4 x 65,2 cm (music score-frame size)

31,7 x 48,8 cm (score paper size)

39 x 28,5 x 28,5 cm (glass vitrine size)

PIETER LAURENS MOL – READ LEAD INDEX



Pieter Laurens Mol – Red Lead Index, Installation view, Parrotta Contemporary Art Cologne, 2018

PIETER LAURENS MOL – READ LEAD INDEX

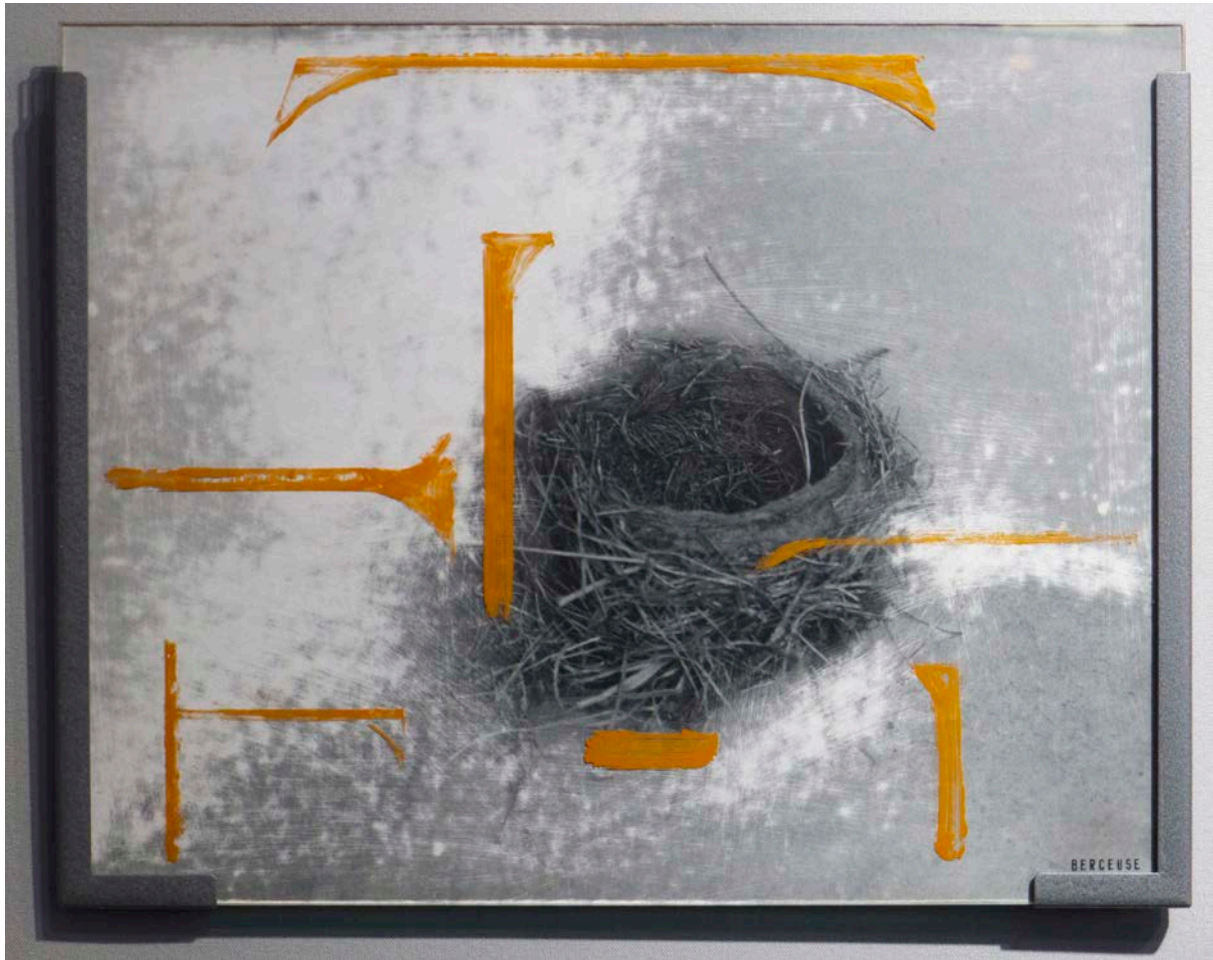


Untitled (The Sudden Saturnine Plague of Tuesday, August 9, 1927), 1998

PLM Inv.Nr.: 1731

red lead on 2 gelatin silver prints,
mounted in passe-partout; acrylic paint on oakwood frame
26,5 x 29 cm (frame size)
(2x) 8,2 x 5,2 cm (picture sizes)

PIETER LAURENS MOL – READ LEAD INDEX



Etude pour La Berceuse (Berceuse), 1986

PLM Inv.Nr.: 1330

sanded black-and-white gelatin silver print on strawboard, red lead paint on glass; steel frame
24,2 x 31,3 cm (overall size)
24 x 31 cm (picture size)

PIETER LAURENS MOL – READ LEAD INDEX



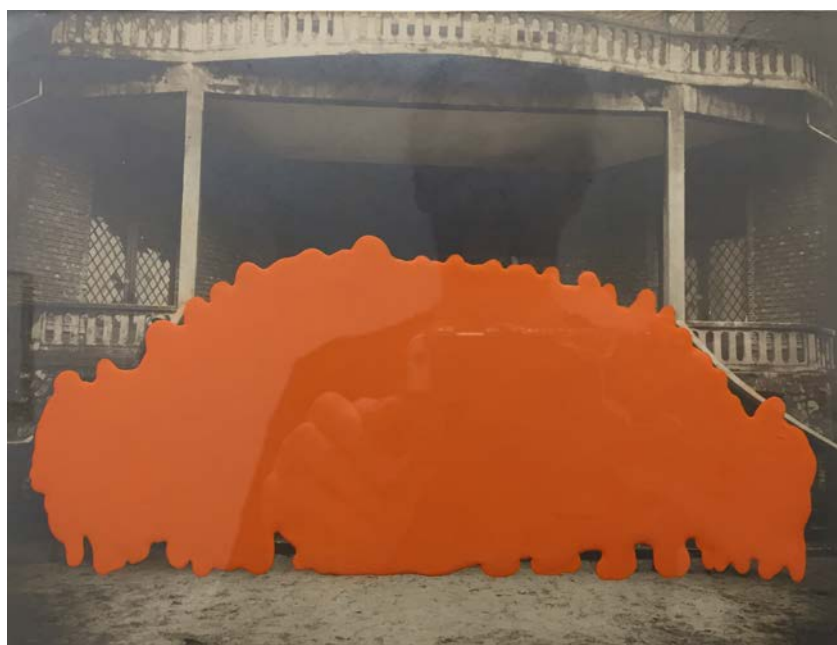
Cipolla di Saturno, 2004

Red lead paint on beechwood, mixed media with broken retroviseur
17,6 x 14,6 x 10,6 cm

PIETER LAURENS MOL – READ LEAD INDEX



Pieter Laurens Mol – Red Lead Index, Installation view, Parrotta Contemporary Art Cologne, 2018



The Red Lead Droop Troop, 1987

PLM Inv.Nr.: 1506

red lead paint on toned gelatin silver print, typed title-text,
mounted in passe-partout; varnished oakwood frame

39,8 x 42,3 cm (frame size)

17,2 x 22,6 cm (image size)

PIETER LAURENS MOL – READ LEAD INDEX



Saturday Spiller, 1986

PLM Inv.Nr.: 1328

black-and-white gelatin silver print on masonite, red lead paint on glass;
steel wall support
25,5 x 24,3 x 8 cm (overall size)



Pieter Laurens Mol – Red Lead Index, Installation view, Parrotta Contemporary Art Cologne, 2018

PIETER LAURENS MOL – READ LEAD INDEX



Pieter Laurens Mol – Red Lead Index, Installation view, Parrotta Contemporary Art Cologne, 2018

PIETER LAURENS MOL – READ LEAD INDEX



Depositum Saturnium, 1987

PLM Inv.Nr.: 1326

red lead paint on old glass pane, mounted in patinated zinc steel construction,
lead on wood panel
26,2 x 18 x 9,3 cm